

The *SHAPE* of *THINGS* to *COME* ...

Vanmark's New Series 2900 Pistachio Huller



Reshape Your Operation

- ❄ Productivity in a small package.
- ❄ Designed for ease of operation, sanitation, and maintenance.
- ❄ Mechanically simple, plus uses no-lube bearings throughout.
- ❄ Gull wing access doors allow quick access for easy clean out, maintenance or sanitation.
- ❄ Exclusive abrasive roll design - already proven in demanding food processing applications.
- ❄ Quick change roll drive system.
- ❄ Variable speed drive¹ for greater process control.
- ❄ Integrated auger feed system¹ maintains constant feed rate for consistent results.

¹ Variable speed drive and auger feed system require separate inverters supplied by customer or at additional cost.



The infeed auger can be seen in this interior view of the low maintenance huller design. Gull wing doors provide easy access.



VANMARK CORPORATION

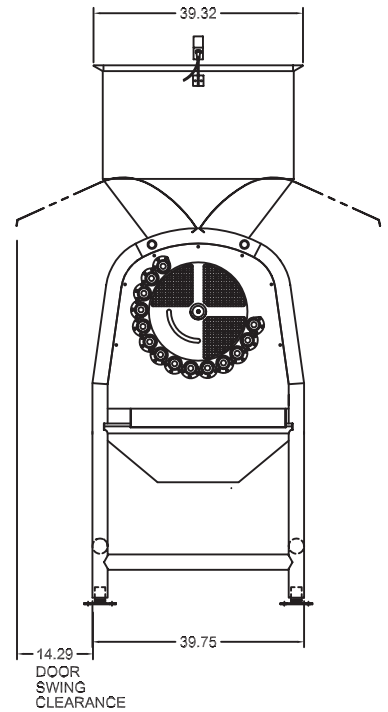
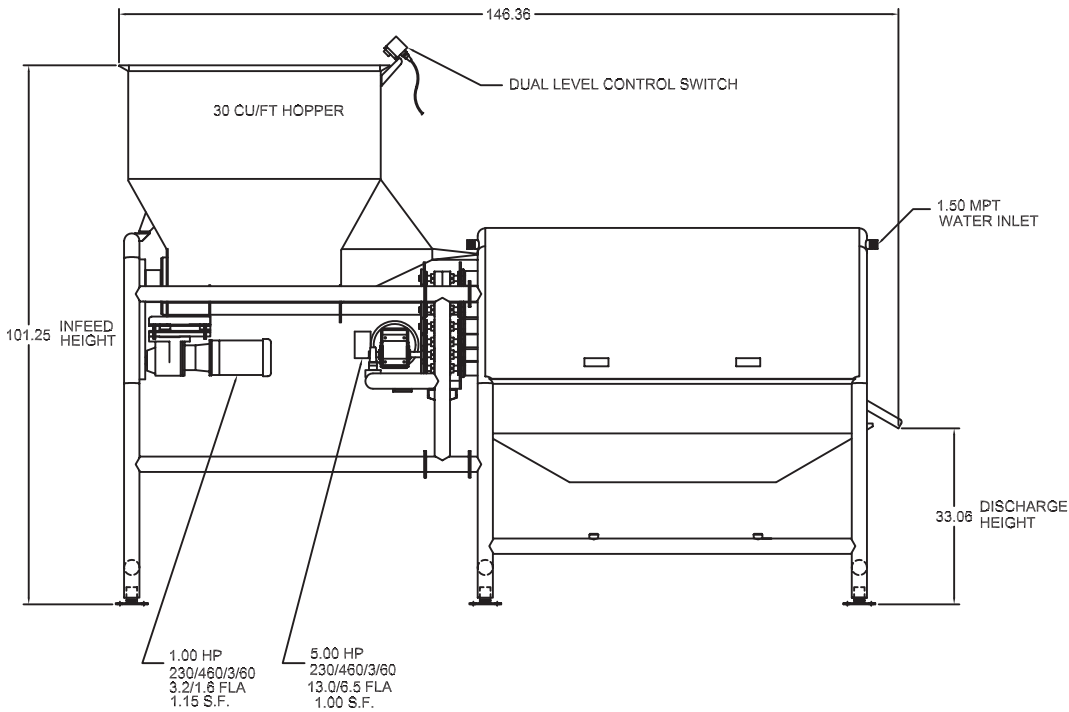
INDUSTRIAL PARKWAY □ CRESTON IOWA 50801

TEL 641-782-6575 □ 800-523-6261

FAX 641-782-9209 □ www.vanmarkcorp.com

...equipment for the food industry...

Vanmark 2900 Series Pistachio Huller



- NOTE: 1. INVERTERS FOR 1.0 HP AND 5.00 HP MOTORS REQUIRED FOR SPEED CONTROL FROM 30HZ TO 90HZ.
2. ALL HEIGHT DIMENSIONS ARE ADJUSTABLE +/- 1.50" WITH USE OF THREADED FOOT PADS.
3. FOR CLARITY, SOME COVERS NOT SHOWN.

2900 Series Pistachio Huller*

* Graphic for general reference only. Do not use for installation.